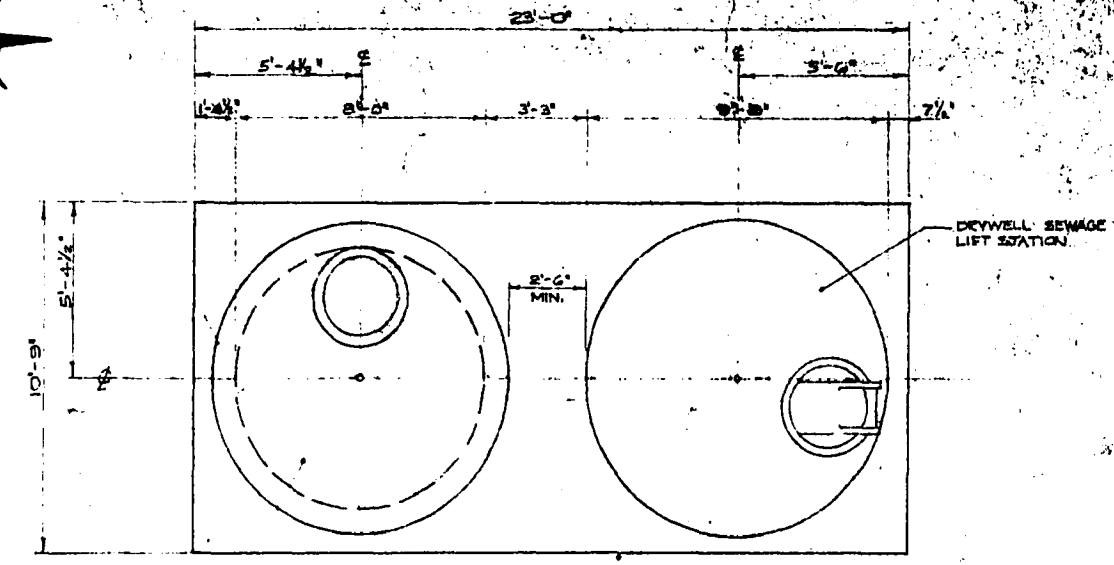
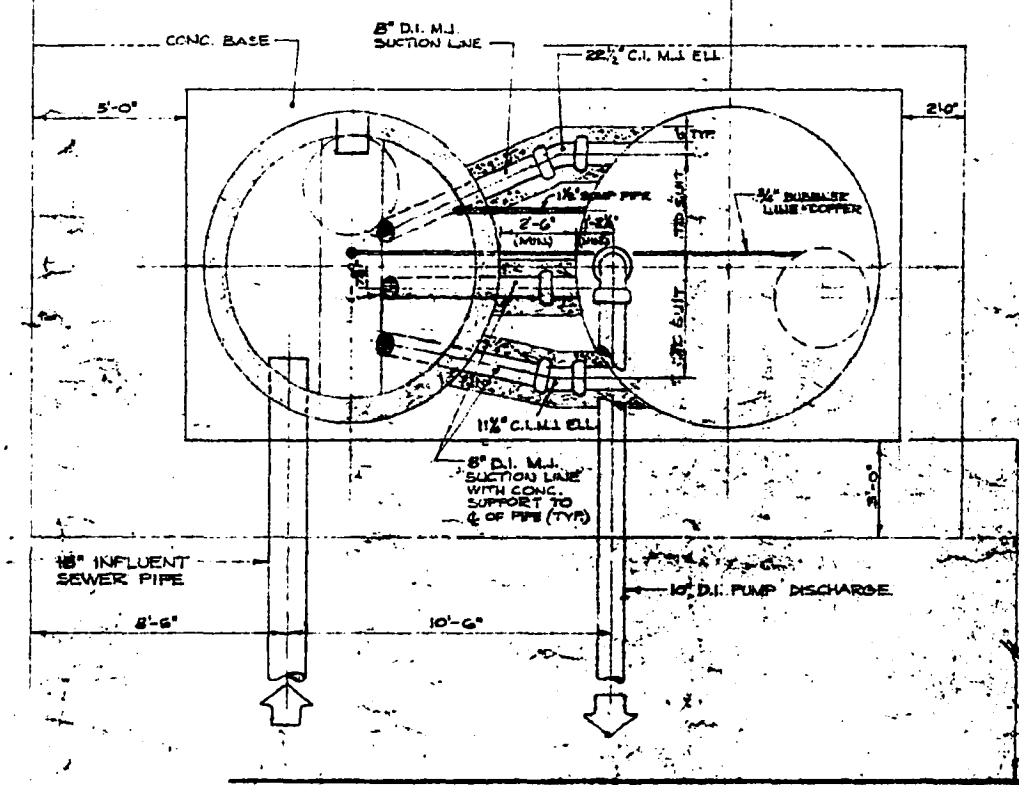


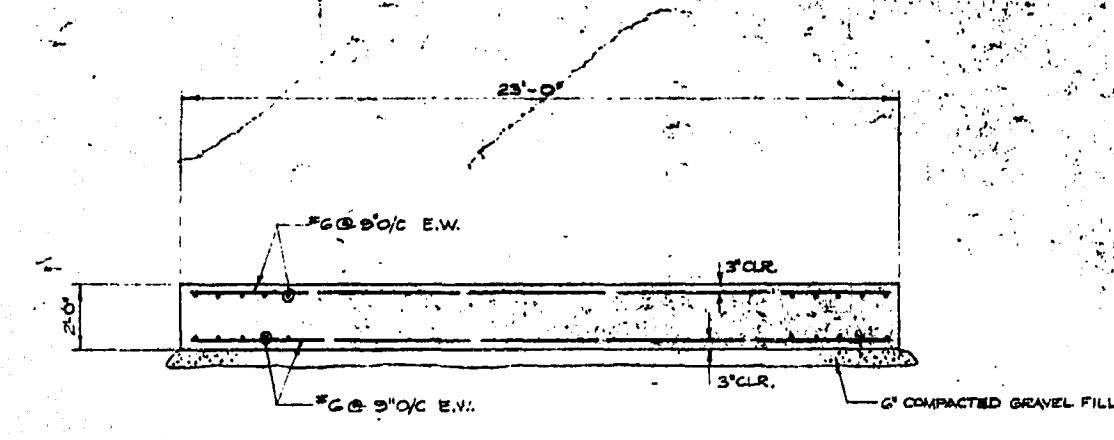
1073 file # SP10267
REF. OF DRAWING NO. DETAILS



PLAN AT ELEV. 65.0
1/4" = 1'-0"

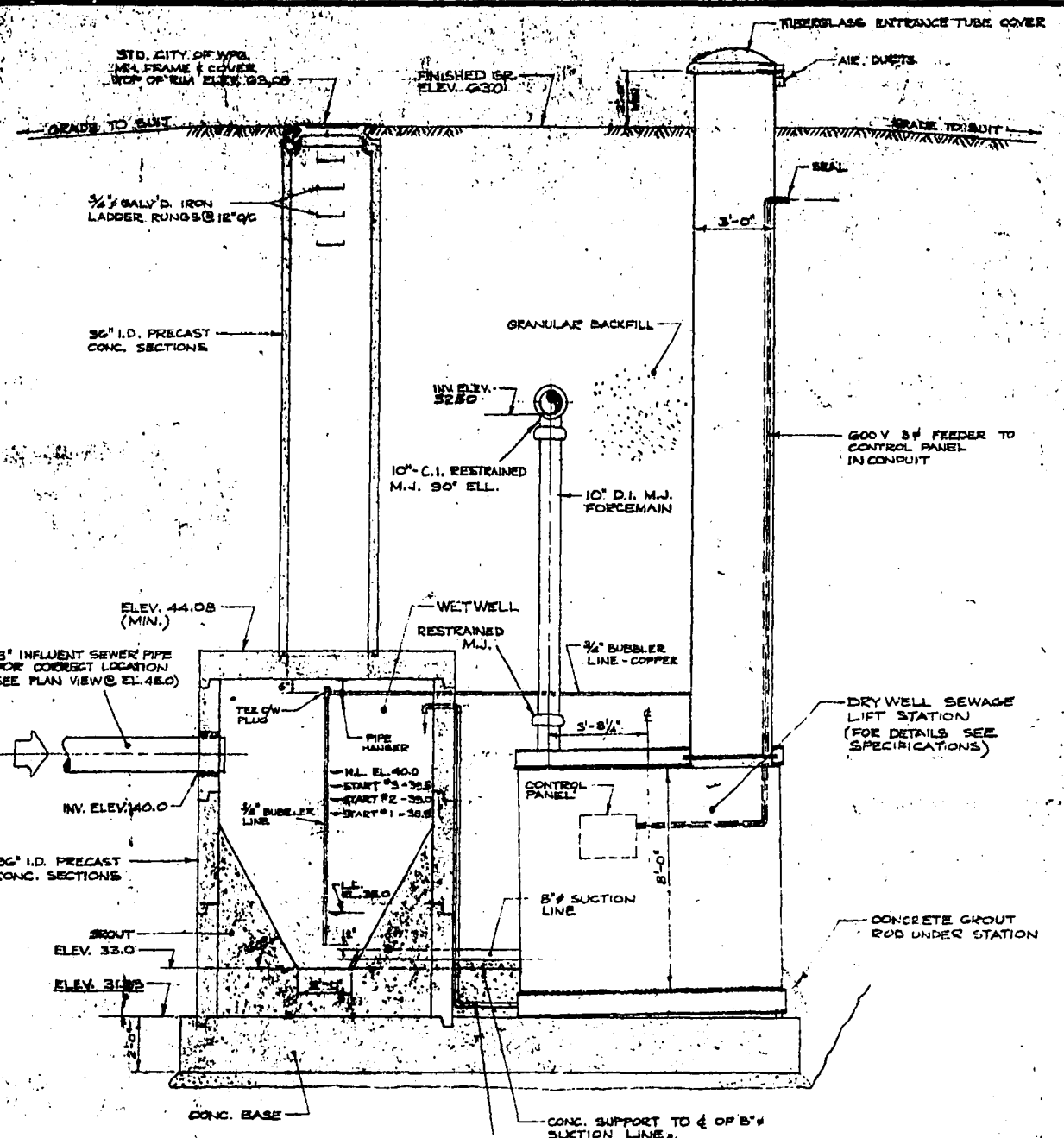


PLAN AT ELEV. 45.0
1/4" = 1'-0"

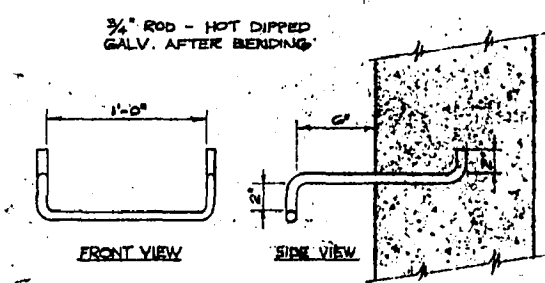


SECTION THROUGH BASE - REINF. DETAILS
1/4" = 1'-0"

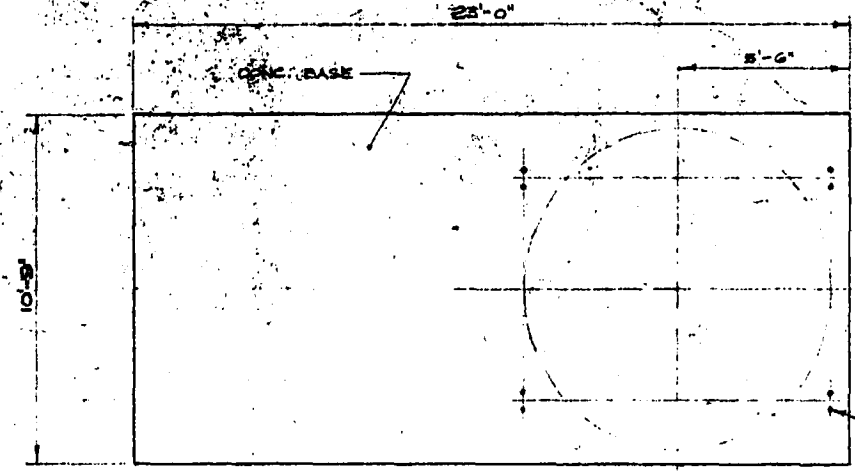
- NOTES
- REINFORCING STEEL TO BE 3" CLEAR FROM FACE OF CONC. BOTH TOP AND BOT.
 - CONCRETE TO BE 3000 P.S.I.
 - REINFORCING - INTERMEDIATE GRADE.
 - POUR BASE ON 6" OF COMPACTED GRAVEL.



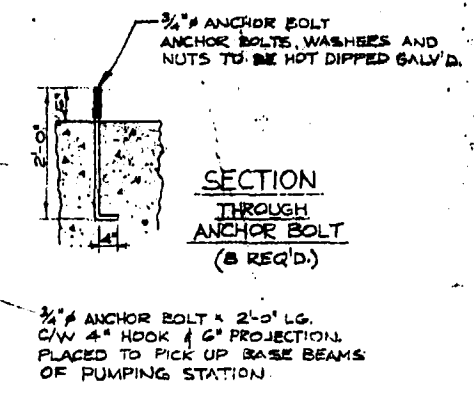
SECTION THROUGH WETWELL SEWAGE LIFT STATION
1/4" = 1'-0"



LADDER RUNG DETAIL
N.T.S.



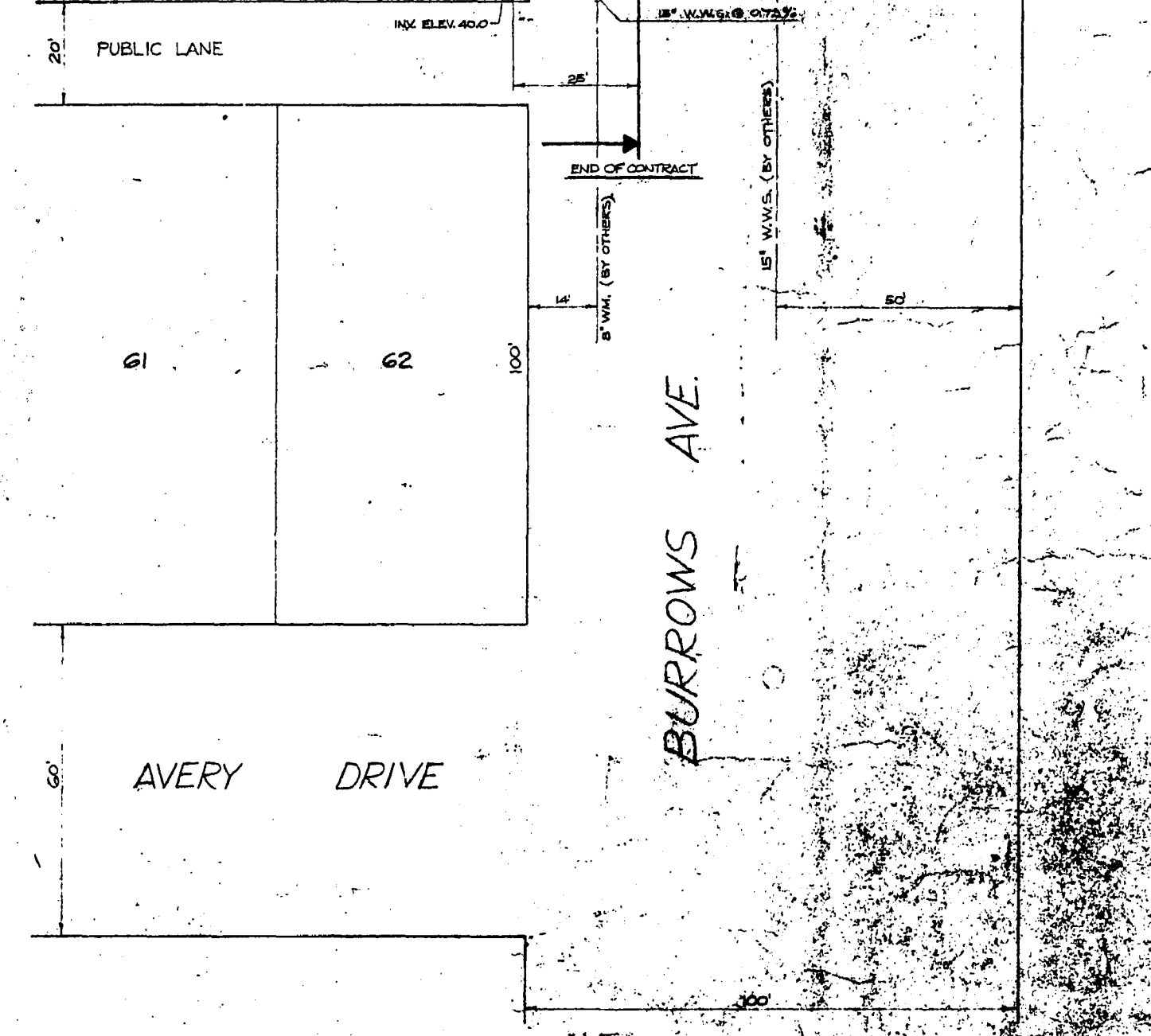
ANCHOR BOLT DETAILS
1/4" = 1'-0"



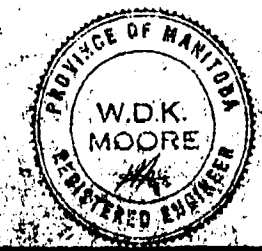
SECTION THROUGH ANCHOR BOLT (8 REQ'D)



NOTE: FOR ELECTRICAL DETAILS SEE DWG. 02



LOCATION PLAN
1" = 20'



UNDERWOOD McLELLAN & ASSOCIATES LTD. ENGINEERING & PLANNING CONSULTANTS BRITISH COLUMBIA - ALBERTA - SASKATCHEWAN - MANITOBA - ONTARIO		CITY OF WINNIPEG COMMUNITY OF LORD SELKIRK CASTLEWOOD HOMES LIMITED		SCALE - AS SHOWN JOB No. 02-1834-03-05
APPROVED BY: <i>[Signature]</i> DATE: 1/10/74	DRAWN BY: L.S. CHECKED BY: K.M.	DESIGNED BY: K.M. CHECKED BY:	SHEET 1 OF 2 DWG. No. 01 REV. A	
REVISED ELECTRICAL 10/10/74 REVISED SITE DIMENSIONS 10/10/74	DATE:	SEWAGE LIFT STATION		

file # SP10267